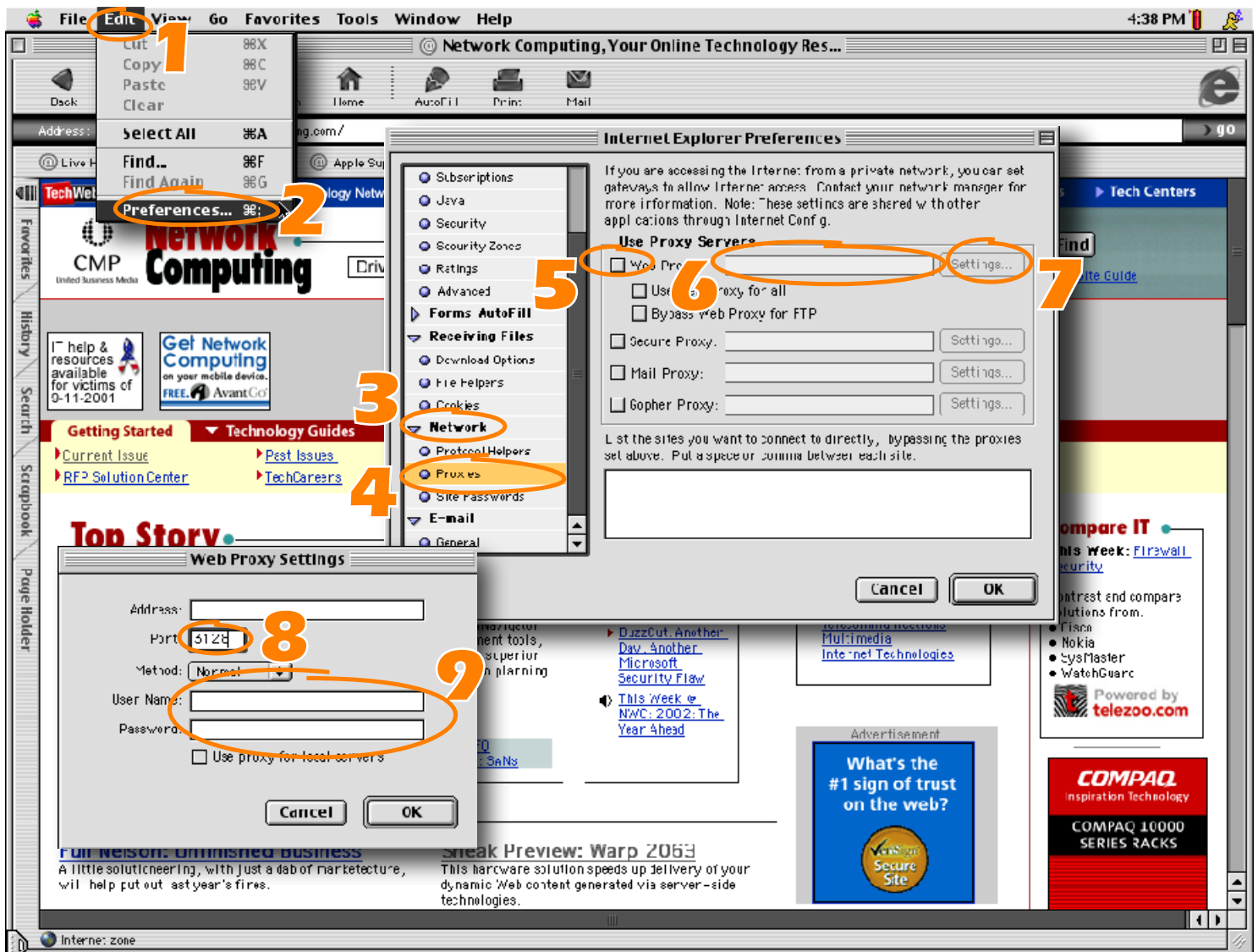


Internet Explorer for Macintosh



1. Access the **Edit** menu.
2. Choose **Preferences**.
3. Click the **Network** arrow to expand the drop-down list.
4. Click **Proxies**.
5. Check the **Web Proxy** checkbox so a checkmark displays in the box.
6. In the associated field, type the address **proxy.optiview.com**.
7. Click the **Settings** button.
8. In the **Port** field, type **3128**.
9. Type your OptiView account number in the **User Name** field, and type your OptiView Password in the **Password** field. You should have received this information in an email message after creating your OptiView account.
10. Click **OK**.
 - o The **Internet Explorer Preferences** dialog is frontmost.
11. Click **OK**.
 - o Your browser is now configured to use OptiView NetCelerate.

For NetCelerate support, contact us at 703.450.8809 or support@optiview.com.