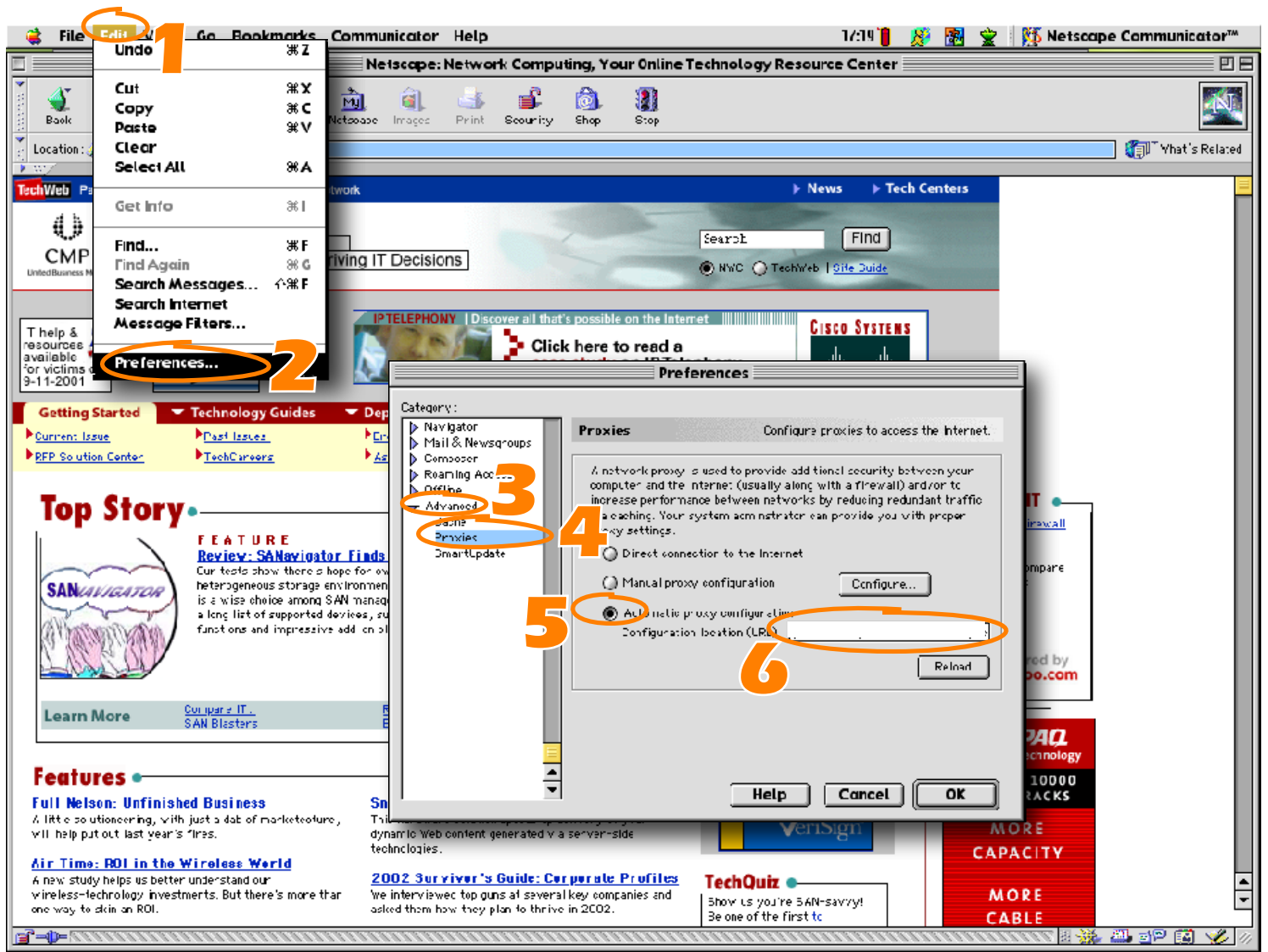


Netscape for Macintosh



1. Access the **Edit** menu.
2. Choose **Preferences**.
3. Click the **Advanced** arrow to expand the drop-down list.
4. Click **Proxies**.
5. Click the **Automatic proxy configuration URL** radio button.
6. In the **Configuration location (URL)** field, type `http://www.optiview.com/trial/proxy.pac`.
7. Click **OK**.
8. When prompted for a user name and password, type your OptiView account number in the **User Name** field, and type your OptiView Password in the **Password** field. You should have received this information in an email message after creating your OptiView account.

○ Your browser is now configured to use OptiView NetCelerate.

For NetCelerate support, contact us at 703.450.8809 or support@optiview.com.