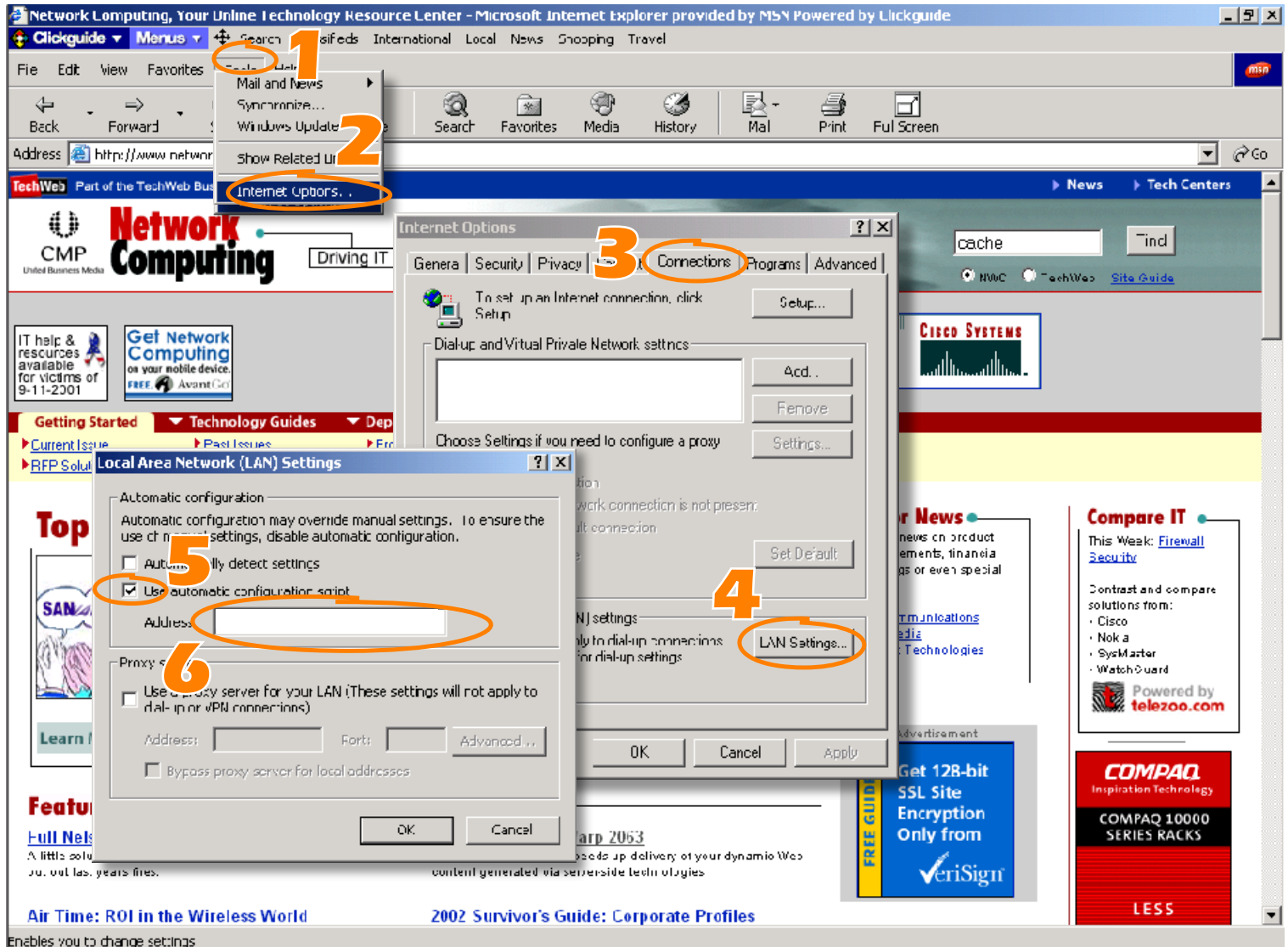


# Internet Explorer for Windows



1. Access the **Tools** menu.
2. Choose **Internet Options**.
3. Click the **Connections** tab.
4. Click the **LAN Settings** button.
5. Click the **Use automatic configuration script** checkbox, so a checkmark displays in the box.
6. In the **Address** field, type `http://www.optiview.com/trial/proxy.pac`.
7. Click **OK**.

8. The **Internet Options** dialog is frontmost.
9. Click the **Advanced** tab.
10. Click the **Use HTTP 1.1 through proxy connections** checkbox, so a checkmark displays in the box.
11. Click **OK**.
12. When prompted for a user name and password, type your OptiView account number in the **User Name** field, and type your OptiView Password in the **Password** field. You should have received this information in an email message after creating your OptiView account.
13. Your browser is now configured to use OptiView NetCelerate.

**For NetCelerate support, contact us at 703.450.8809 or support@optiview.com.**