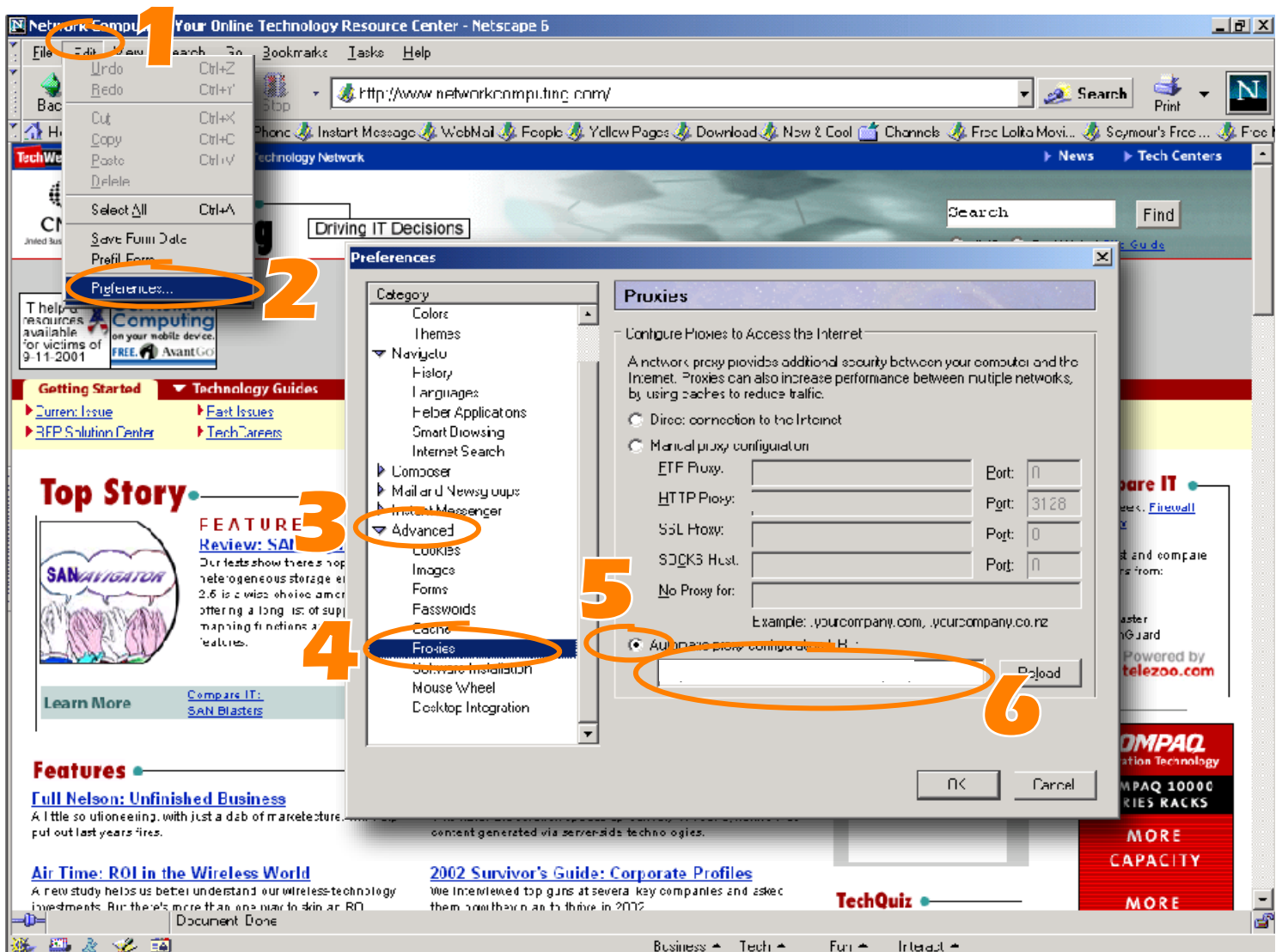


Netscape for Windows



1. Access the **Edit** menu.
 2. Choose **Preferences**.
 3. Click the **Advanced** arrow to expand the drop-down list.
 4. Click **Proxies**.
 5. Click the **Automatic proxy configuration URL** radio button.
 6. In the associated field, type `http://www.optiview.com/trial/proxy.pac`.
 7. Click **OK**.
 8. When prompted for a user name and password, type your OptiView account number in the **User Name** field, and type your OptiView Password in the **Password** field. You should have received this information in an email message after creating your OptiView account.
- Your browser is now configured to use OptiView NetCelerate.

For NetCelerate support, contact us at 703.450.8809 or support@optiview.com.